

Integration



ECRE Perspective

Dawit and Rashid

- Not being stigmatised
- Being treated as a human being
 - Integration for all
 - Hope/Future
 - Protection
 - Enjoying rights

ECRE's Definition

- A two-way process
- Dynamic and long-term
- A day-one approach
- Multi-dimensional

Integration Dimensions

- Legal (secure legal status, access to civil, political, economic, and social cultural rights, access to citizenship);
- Socio-Economic (housing, employment, education, vocational training, and health)
- Socio-Cultural (acquisition of knowledge of host society's language, history and institutions, participation in societal processes, equal treatment and protection from discrimination and inter-cultural dialogue).

What is a good practice on integration?

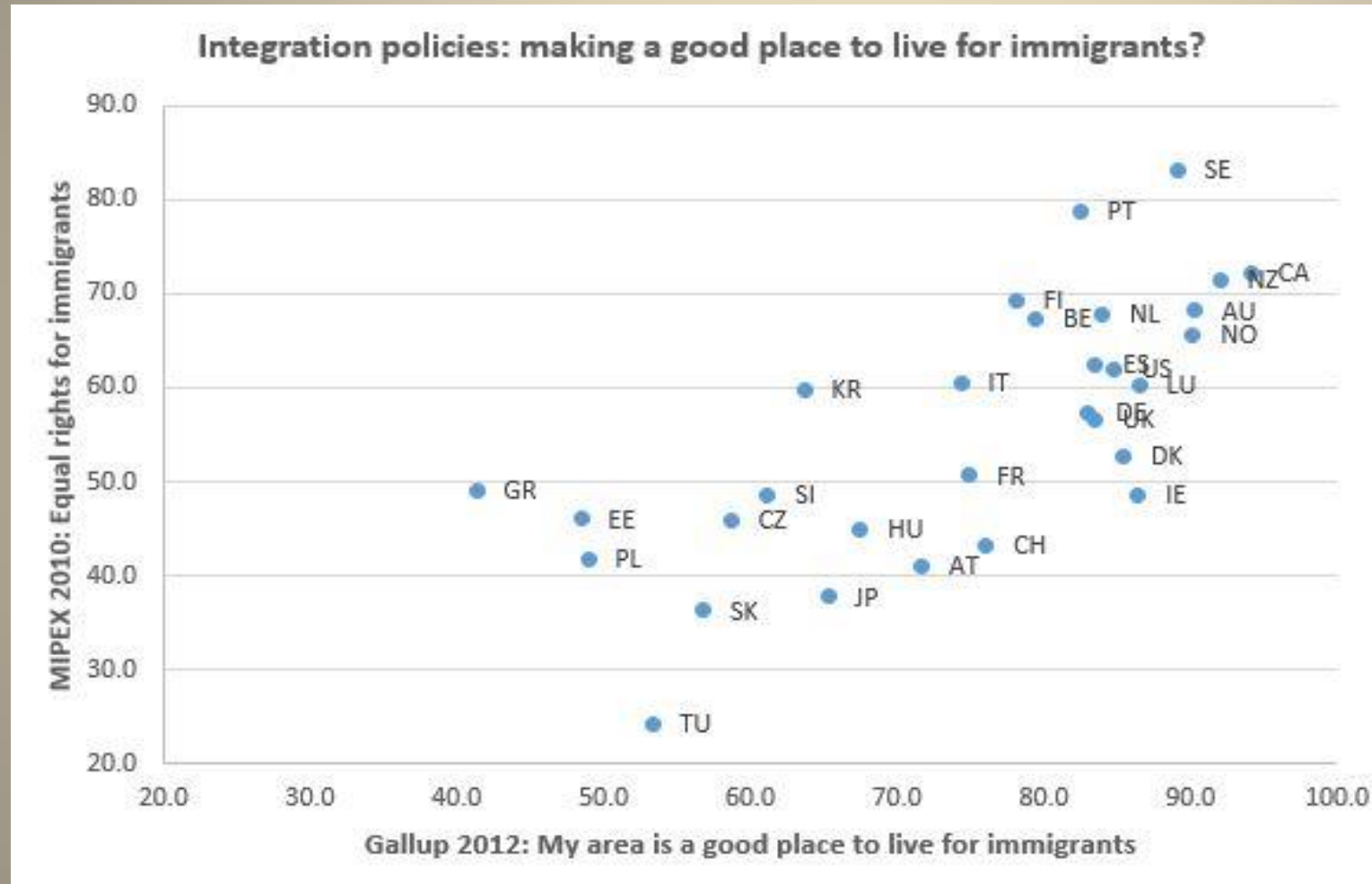
- Facilitate access to rights
 - Clear goals
 - Partnerships
- Degree of success, meant as achievement of the policy objectives
- Degree of economic and financial sustainability
 - Degree of transferability

The narration





Public opinion/Integration policies



Refugee integration: what do we know

- Low labour market integration
- Lower educational attainment
- Higher likelihood of being overqualified
- Significant gaps exist between refugees and other populations relating to poverty, social exclusion and living conditions

Specificities

- **Flight (unpreparedness, country of origin, lack of return perspective)**
- **Trauma pre-post arrival**
- **Asylum procedure**
- **Family separation**
- **Lack of network**
- **High resilience/High adaptability**

INTEGRATION: THE BASICS

Rights under EU Law

Recast Qualification Directive

Information (Article 22)	Recognition of qualifications (Article 28)
Family Unity (Article 23)	Social welfare (Article 29)
Residence permits (Article 24)	Health care (Article 30)
Travel documents (Article 25)	Access to accommodation (Article 32)
Access to employment (Article 26)	Freedom of movement (Article 33)
Access to education (Article 27)	Access to integration facilities (Article 34)

Family Reunification

PROS	CONS
More favourable rules for refugees (exemption from requirements)	Exclusion of beneficiaries of subsidiary protection
Rights for family members (education, employment, autonomous permit/5y)	Dependency of family members
Lack of documentation cannot lead to rejection	Application lodged in third countries
Immediate access to the procedure once status granted	Three-months to lodge the application

Long-term Residence

Access to employment and self-employed	Social security, social assistance and social protection as defined by national law
Access to education and vocational training, including study grants in accordance with national law (prohibition of higher enrolment fees for universities)	tax benefits, access to goods and services and to procedures for obtaining housing, freedom of association and affiliation and membership of an organisation representing workers or employers
Recognition of diplomas, other qualifications, in accordance with the relevant national procedures	Protection against expulsion and right to reside in another Member State under certain conditions

Citizenship

EUDO Citizenship Observatory

Naturalisation is the best guarantee of secure residence and equal rights

It improves:

Employment rate, income, housing situation, and participation in elections and other political actions.

Good practices: The two-way process

STATES' PRACTICES

- Welcoming Communities Initiative - Canada
 - New Scots (2014-2014) - Scotland

Campaign/Awareness raising

- Anti-Rumor Campaigns, From Barcelona to Toronto
 - Refugee Awareness Project

Housing/Employment

Program Accelair, Forum Réfugiés: In 14 years, at the regional level

2 150 families accommodated in private housing

More than 1 600 trainings offered

2 700 contracts signed

Transferred at national level

Housing

Les groupes d'épargne collective et solidaire: bilan et perspectives - Google Chrome

www.cire.be/services/logement/groupe-d-epargne-solidaire-et-collective/les-groupes-d-epargne-collective-et-solidaire-bilan-et-perspectives

ciré LE CIRÉ THÉMATIQUES SERVICES PUBLICATIONS SENSIBILISATION PRESSE CONTACTS

[Twitter](#)

[J'aime](#)

[Partager](#)

[G+](#)

Lu 1250

[Imprimer](#)



Les Groupes d'Épargne Collective et Solidaire : bilan et perspectives

Groupe d'épargne collective et solidaire

Community land trust (CLT)

Garanties locatives

Projet d'épargne probatoire solidaire (PEPS)

Structure d'accueil pour demandeurs d'asile

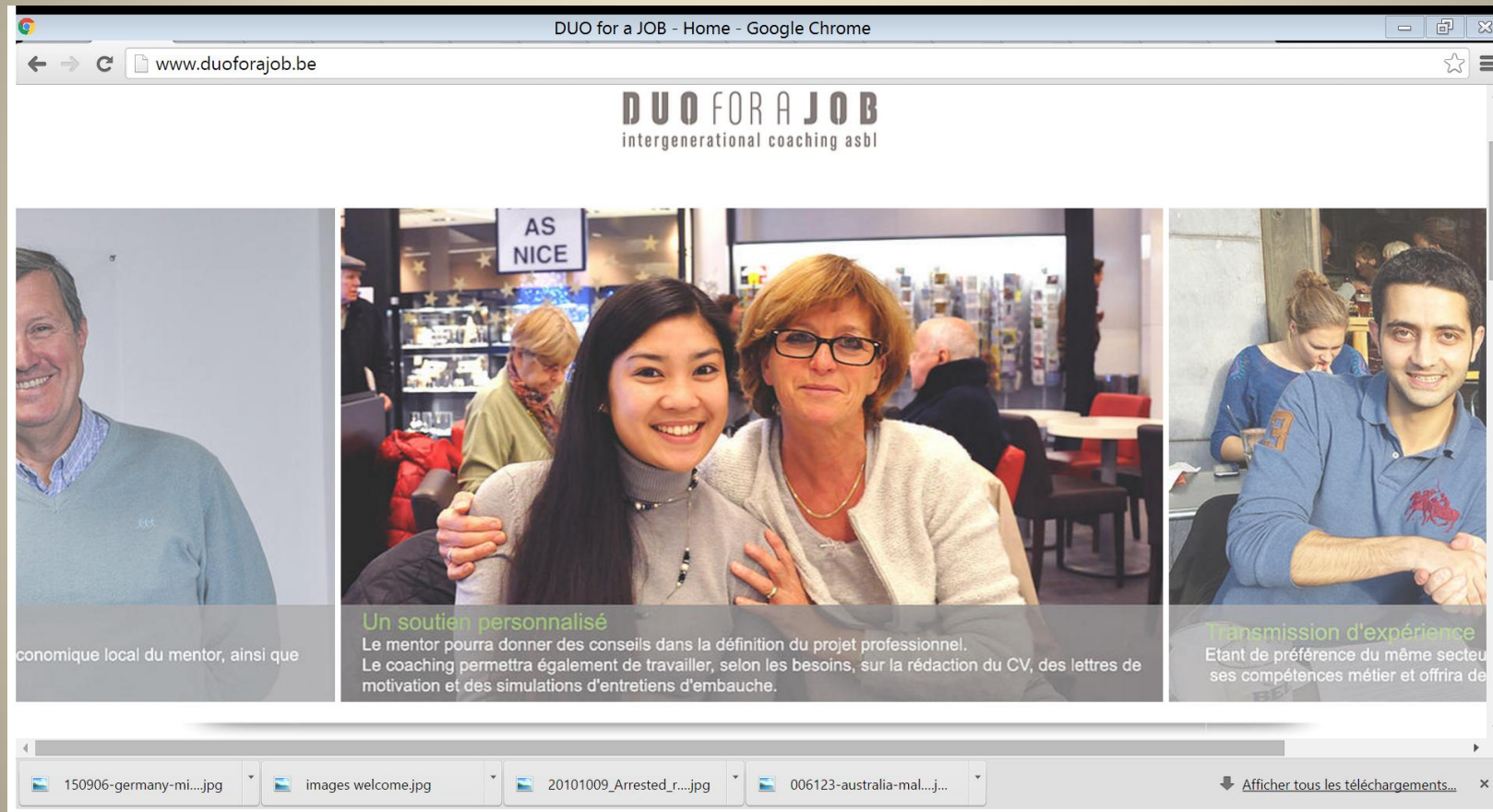
Travail, équivalences & formations (TEF)

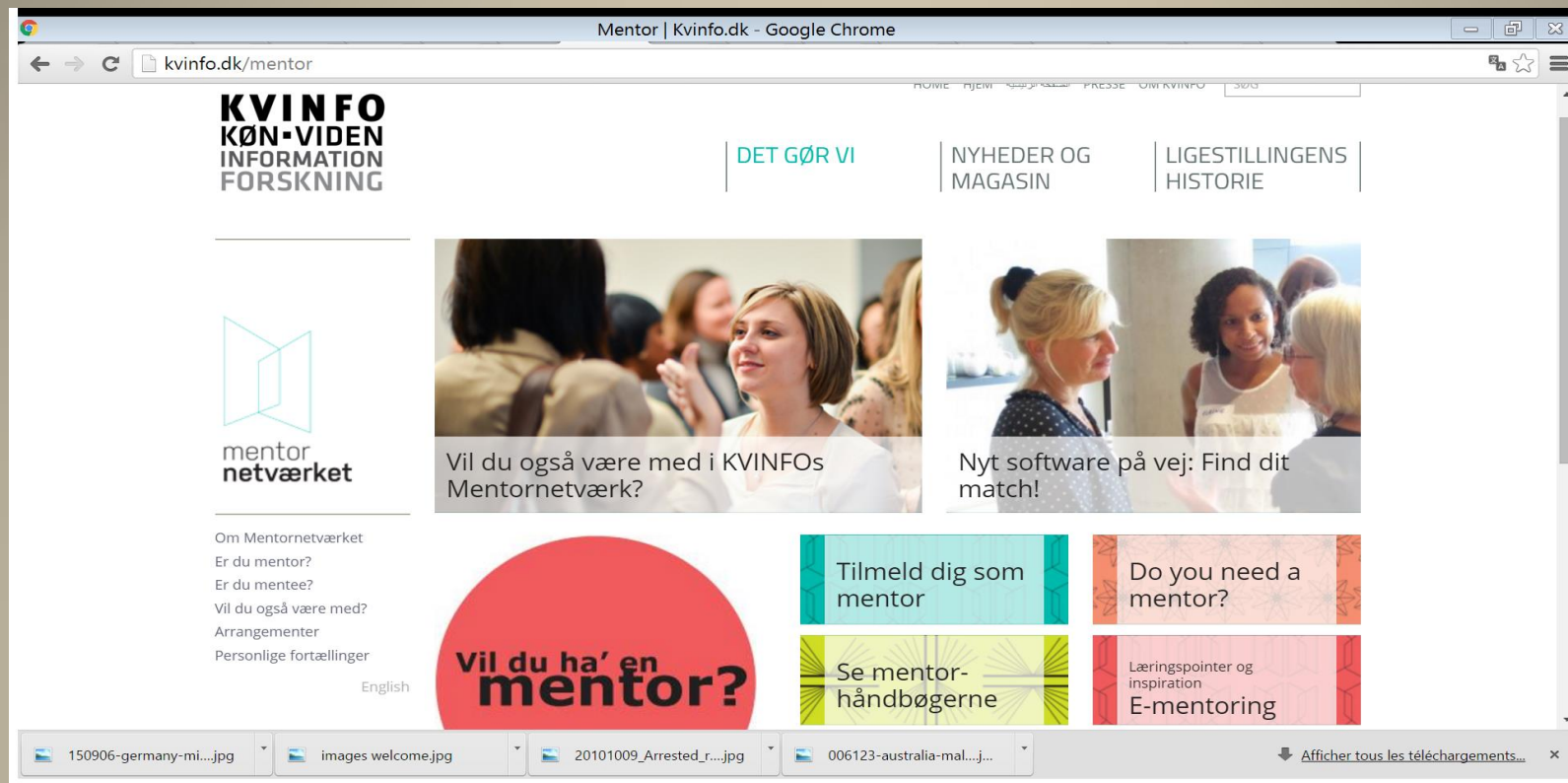


150906-germany-mi...jpg images welcome.jpg 20101009_Arrested_r...jpg 006123-australia-mal...j...

[Afficher tous les téléchargements...](#)

Mentoring for employment





5000 participants in 2013

2000 mentor/mentee partnerships

More than 500 mentees have entered into employment

35 percent have begun studying

77 percent have improved their Danish language skills

Employment



Citizen's initiatives

- Give Something Back to Berlin – Germany

<http://givesomethingbacktoberlin.com/>

- CALM, Singa

<https://co-city.fr/en/projects/2-calm-like-at-home>

- Kiron University

<https://kiron.university/>

- Techfugees

<https://www.facebook.com/Techfugees/>